

Air head APS life-support hat



Ordering information

Air head APS life-support hat	T.99.03530
Testing unit	T.99.03616

The helmet was designed to be an Anti- Panic-Helmet. An analogue security system avoids, that the operator reflexively takes the helmet of his head. After having closed the latch assembly a second person is in charge to drive the screws. Like that the operator cannot untighten the latch assembly by himself.

The helmet is designed to offer its user the best comfort as possible in a narrow space at the inside of the helmet:

- Two pads so the head won't hit the hard helmet
- A Kevlar net with the possibility to fit in foam material parts, in case the user has a smaller head
- A PVC pillow that can be pumped with air to ensure that the head is in a fixed position inside the helmet
- The communication assembly contains one head phone inside the helmet and a bone microphone . The bone microphone does not transmit the breathing sound of the operator and has a magnifi cent voice quality

The helmets have two inlet air regulators, a primary and a secondary. Both regulators have an individual air supply line, called pigtail. This will ensure that in case one air supply gets cut, the operator under helmet has a second air supply.

For safety reasons we have a third option for emergency air supply. One system is a 5 liters air bottle that is fixed to the harness at hip height.

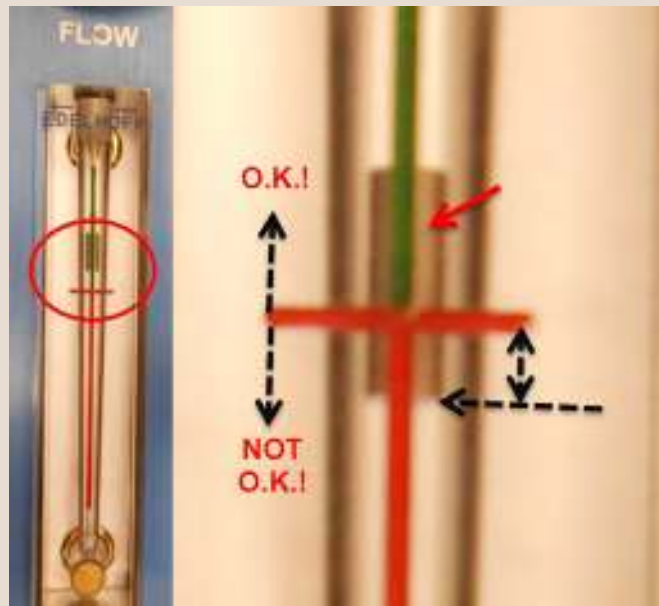
Alternatively the operator under helmet has an extra air supply line, that is connected to a separate air cylinder next to the manhole.



Testing unit

Acceptance testing of the Air head APS life-support hat, using the test instrument.

During free flow, observe movement of the steel flow body. Compare the bottom edge to the horizontal line:
Bottom above the line = helmet is OK!



All rights reserved. Reproduction in any form or by any means is not allowed, without prior permission in writing from IHC Merwede BV

IHC Hytech BV

Elftweg 3, 4941 VR, Raamsdonksveer
The Netherlands

T +31 162 52 22 02
F +31 162 51 90 69

hytech@ihcmerwede.com
www.ihcmerwede.com
www.ihchytech.com